

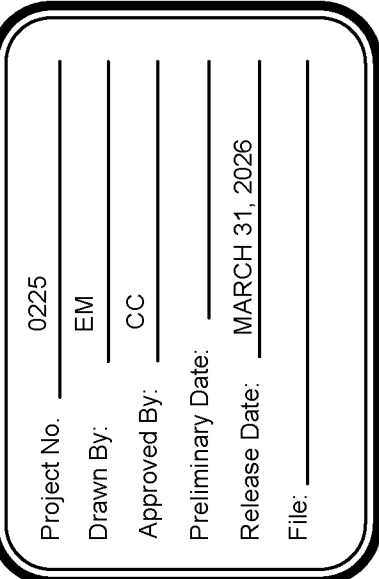
PLUMBING SCHEDULE						
MARK DESCRIPTION	MANUFACTURER					REMARKS
		WASTE	VENT	HW	CW	
WC-A WATER CLOSET TANK TYPE FLOOR MOUNT ADA	KOHLER - K-3493 CENTOCO - 500CCSS	4"	3"	--	1"	WHITE VITREOUS CHINA, ELONGATED BOWL, PRESSURE-LITE 1.4 GAL FLUSH 17" HIGH FLOOR MOUNT WATER CLOSET WITH ELONGATED BOWL, TANK, LEVER HANDLE, AND BOLT CAPS. WHITE OPEN FRONT SEATLESS COVER WITH S.S. CHECK HINGE. INSTALL AS PER ADA REQUIREMENTS. INSTALL FLUSH HANDLE ON WIDE SIDE OF STALL.
U-A URINAL MANUAL FLUSH VALVE ADA	KOHLER - K-4991-ET SLOAN - ROYAL 186 WADE - W400	2"	2"	--	3/4"	WHITE VITREOUS CHINA, SIPHON JET ACTION URINAL WITH 3/4" REAR SPUD (1.0 GPF). BEEHIVE STRAINER. MANUAL FLUSH VALVE WITH POLISHED FINISH, MANUAL TOP SPUD TYPE FLUSH VALVE. COORDINATE MOUNTING HEIGHT WITH ARCHITECTURAL DRAWING TO COMPLY WITH ADA REQUIREMENTS. PROVIDE FLOOR MOUNTED CARRIER.
L-A LAVATORY WALL-HUNG ADA	KOHLER - K-2031 CHICAGO - 333-665PSHABCP TRUEBRO - 102 LEONARD - 170D-LF	2"	2"	1/2"	1/2"	WHITE, VITREOUS CHINA WALL-HUNG LAVATORY WITH SINGLE HOLE, ADA METERING FAUCET (0.5 GPM, 0.1 MAX GALLON/CYCLE) WITH FRONT PUSH HANDLE AND ADJUSTABLE SELF-CLOSING CARTRIDGE PRESET RUN TIME FOR 12 SECONDS. GRID DRAIN STRAINER AND TAILPIECE, 1-1/4" 17 GA. CAST BRASS P-TRAP WITH CLEANOUT PLUG, 3/8" ANGLE SUPPLY WITH STOP. PROVIDE CONCEALED ARM FLOOR MOUNTED CARRIER. COVER P-TRAP, WATER SUPPLIES WITH TRUEBRO 102 LAVSHIELD. PROVIDE ASSE 1070 THERMOSTATIC MIXING VALVE MOUNTED ON WALL UNDER LAVATORY.
SHA SHOWER ADA	SHOWER BY ARCHITECT LEONARD - 76-3A	2"	2"	3/4"	3/4"	SINGLE HAND THERMOSTATIC AND PRESSURE BALANCING MIXING SHOWER VALVE (7600), VACUUM BREAKER, HAND/WALL SHOWER HEAD, 60" SHOWER HOSE, 24" GLIDE BAR (501p), DIVERTER VALVE (D2L), ADJUSTABLE SPRAY SHOWER HEAD (H-02). INSTALL AS PER ADA REQUIREMENTS. REFER TO MANUFACTURER'S INSTALLATION INSTRUCTIONS. PROVIDE FLOOR DRAIN FD-A.
SK-A SINK SINGLE-COMPARTMENT	ELKAY - B1C18X18X T&S - B-1146-02A-CR-4W-S LEONARD - 170D-LF	2"	2"	1/2"	1/2"	18 GA. TYPE 304 STAINLESS STEEL 21"x21-1/2"x12" DEEP SINGLE-COMPARTMENT SINK, 8" HIGH BACKSPLASH AND STAINLESS STEEL LEGS, LK ROTARY LEVER OPERATED DRAIN OUTLET FITTING FOR 3-1/2" OPENING, STAINLESS STEEL FLANGE WITH BRASS BODY, STAINLESS STEEL PERFORATED GRID, C.P. BRASS 1-1/2" O.D., 4" TAIL PIECE AND STAINLESS STEEL LEVER ARM. FAUCET SHALL BE CHROME PLATED BACK MOUNT SINK FAUCET WITH LEVER HANDLES, SWIVEL GOOSENECK SPT WITH 2.2 GPM AERATOR, GRID DRAIN STRAINER AND TAILPIECE, 1-1/4" 17 GA. CAST BRASS P-TRAP WITH CLEANOUT PLUG, 3/8" ANGLE SUPPLY WITH STOP. COVER P-TRAP, WATER SUPPLIES WITH TRUEBRO 102 LAVSHIELD. PROVIDE ASSE 1070 THERMOSTATIC MIXING VALVE MOUNTED ON WALL UNDER SINK.
SK-B SINK DOUBLE-COMPARTMENT	ELKAY - SS8236R T&S - B-0133-EE-B - LK945DS20L2T	2"	2"	1/2"	1/2"	61-1/2"x27-1/2"x44" (INSIDE EA. BOWL 18"x24"x14" DEEP) 14 GAUGE TYPE 304 STAINLESS STEEL 2 COMPARTMENT SINK WITH RIGHT DRAINBOARD, 8" HIGH BACKSPLASH AND STAINLESS STEEL LEGS, (3) LK ROTARY LEVER OPERATED DRAIN OUTLET FITTINGS FOR 3-1/2" OPENING, STAINLESS STEEL FLANGE WITH BRASS BODY, STAINLESS STEEL PERFORATED GRID, C.P. BRASS 1-1/2" O.D., 4" TAIL PIECE AND STAINLESS STEEL LEVER ARM. (2) CHROME PLATED BACK MOUNT SINK FAUCET WITH LEVER HANDLES, 18" D.J. SWING SPOUT WITH AE13A 2.2 GPM AERATOR AND LK-76 CONTINUOUS WASTE.
SS-A SERVICE SINK	ZURN - Z-1996-24 T&S - B-0665-BSTR	3"	2"	3/4"	3/4"	24"x24" CUSTODIAL FLOOR SINK, 8" WALL MOUTED FAUCET, CHROM PLATED WITH VACUUM BREAKER, INTEGRAL STOPS, QUARTER-TURN COMPRESSION CARTRIDGES WITH SPRING CHECKS, ADJUSTABLE WALL BRACE, PAUL HOOK, 3/4" HOSE THREAD ON SPOUT, HOSE AND HOSE BRACKET, MOP HANGER, AND STAINLESS STEEL WALL GUARD.
TCS SINK 3-COMP CONCESSION	ELKAY - 14-3C16X20-R-18X T&S - B-0133-EE-B - LK945DS20L2T	3"	2"	3/4"	3/4"	72-1/2"x25-13/16"x43-3/4" (INSIDE EA. BOWL 16"x20"x14" DEEP) 16 GAUGE TYPE STAINLESS STEEL 3 COMPARTMENT SINK WITH RIGHT DRAINBOARD, 9" HIGH BACKSPLASH AND STAINLESS STEEL LEGS, (3) LK ROTARY LEVER OPERATED DRAIN OUTLET FITTINGS FOR 3-1/2" OPENING, STAINLESS STEEL FLANGE WITH BRASS BODY, STAINLESS STEEL PERFORATED GRID, C.P. BRASS 1-1/2" O.D., 4" TAIL PIECE AND STAINLESS STEEL LEVER ARM. (2) CHROME PLATED BACK MOUNT SINK FAUCET WITH LEVER HANDLES, 18" D.J. SWING SPOUT WITH AE13A 2.2 GPM AERATOR AND LK-76 CONTINUOUS WASTE AND EXTEND TO FLOOR SINK WITH AIR GAP.
EWC ELECTRIC WATER COOLER BI-LEVEL BOTTLE FILLING	ELKAY - EMABFTL8WSK - EZWSR - 98324C	2"	2"	--	1/2"	BI-LEVEL ELECTRIC WATER COOLER WITH STAINLESS STEEL BOTTLE FILLING STATION, REFRIGERATED WATER COOLER, WALL HUNG, STAINLESS STEEL FINISH, NON-FILTERED, 1.1 GPM OF 50 DEGREE WATER, 90 DEGREE INLET WATER WITH 90 DEGREE AMBIENT, 4.2 F.L.A., 120 VOLT. MOUNT TO COMPLY WITH ADA REQUIREMENTS AND ARCHITECTURAL DRAWINGS. PROVIDE ANGLE SUPPLY WITH STOP AND 1-1/2" 17 GA. CAST BRASS P-TRAP, PROVIDE IN WALL CARRIER SUPPORT. PROVIDE UNIT WITH CANE APRON GUARD. COORDINATE ELECTRICAL REQUIREMENTS WITH ELECTRICAL CONTRACTOR.
FD-A FLOOR DRAIN	ZURN - Z415B	3"	2"	--	--	CAST IRON FLOOR DRAIN WITH FLANGE, INTEGRAL CLAMPING COLLAR, SEEPAGE OPENING, ADJUSTABLE 6" DIA. NICKEL BRONZE STRAINER WITH SQUARE PERFORATIONS, TRAP PRIMER CONNECTION, P-TRAP.
FD-B FLOOR DRAIN RECESSED	ZURN - Z415I	3"	2"	--	--	CAST IRON FLOOR DRAIN WITH FLANGE, INTEGRAL CLAMPING COLLAR, SEEPAGE OPENING, ADJUSTABLE 7" DIA. NICKEL BRONZE EXTENDED RIM STRAINER WITH SQUARE PERFORATIONS, P-TRAP.
FS FLOOR SINK	ZURN- Z1901	3"	2"	--	--	12"x12"x8" DEEP CAST IRON FLOOR SINK, CLAMPING DEVICE, NICKEL BRONZE HINGED GRATE WITH 3/4" HOLES, SEDIMENT BASKET AND BOTTOM OUTLET.
HB-A HOSE BIBB	WOODFORD - B65	--	--	--	3/4"	ANTI-SIPHON, FREEZELESS VACUUM BREAKER, PROTECTED WALL FAUCET WITH 3/4" HOSE THREAD, BRASS CONSTRUCTION, TEE KEY HANDLE.
FCO FLOOR CLEANOUT	ZURN - Z1400	LINE SIZE	--	--	--	CAST IRON FLOOR CLEANOUT WITH ROUND ADJUSTABLE SCORIATED NICKEL BRONZE TOP. COORDINATE TOP STYLE WITH FINISHED FLOOR MATERIAL (CARPET, TILE, ETC.).
WCO WALL CLEANOUT	ZURN - Z1446	LINE SIZE	--	--	--	CAST IRON CLEANOUT TEE WITH BRASS PLUG AND SECURED STAINLESS STEEL ACCESS COVER.
ECO EXTERIOR CLEANOUT	JONES STEPHENS - S36-008	LINE SIZE	--	--	--	CAST IRON FRAME AND COVER MARKED "SEWER CLEANOUT". PROVIDE AS DETAILED IN CONCRETE SLAB.
IMB ICE MAKER BOX	GUY GRAY - BIM875	--	--	--	1/2"	PROVIDE 3/8" ANGLE SUPPLY WITH STOP IN 20 GA. METAL RECESSED BOX MOUNTED FLUSH. COORDINATE MOUNTING HEIGHT WITH ARCHITECT PRIOR TO ROUGH-IN.
TMV THERMOSTATIC MIXING VALVE	LEONARD - LV-20-E-LF	--	--	--	--	THERMOSTATIC WATER MIXING VALVE, MINIMUM FLOW AT 1 GPM AND MAXIMUM FLOW AT 9 GPM WITH MAXIMUM OPERATING PRESSURE OF 125 PSI AND 10 PSI PRESSURE DROP, 3/4" THREADED INLET AND OUTLET, INTEGRAL COMBINATION CHECKSTOPS, COPPER ENCAPSULATED THERMOSTATIC WITH STAINLESS STEEL INTERNAL PARTS AND SHUTTLE. ROUGH BRONZE FINISH, LOCKING TEMPERATURE REGULATING HANDLE, INLET THERMOMETERS, AND BALL VALVE WITH DIAL THERMOMETER.
HWCP HOT WATER CIRCULATING PUMP	GRUNDFOS - UP15-42SF	--	--	--	--	IN-LINE CIRCULATOR PUMP WITH BRONZE BODY AND BRASS IMPELLER, MECHANICAL SEAL, BRONZE SLEEVE, OIL LUBRICATED BEARING, FLEXIBLE COUPLER, UL LISTED DRIP PROOF 1/25 HP MOTOR WITH VOLTAGE TO BE 120-1-60. COORDINATE WITH ELECTRICAL.

PLUMBING FIXTURES:	AMERICAN STANDARD, SLOAN, TOTO, ZURN
DRAINS, CLEANOUTS, CARRIERS:	JOSAM, J.R. SMITH, MIFAB, WATTS, ZURN
SINKS:	ADVANCE TABCO, GRIFFIN, JUST
SERVICE SINKS:	ACORN, FLORSTONE, MUSTEE, STERN WILLIAMS, ZURN
HOSE BIBBS:	J.R. SMITH, MIFAB, PRIER, WATTS, ZURN
FLUSH VALVES:	SLOAN
TEMPERING VALVES:	BRADLEY, LAWLER, POWERS
FAUCETS:	CHICAGO, DELTA COMMERCIAL, MOEN COMMERCIAL, SLOAN, SPEAKMAN, T&S, ZURN
ELECTRIC WATER COOLER:	ACORN, HAWS, HALSEY TAYLOR, OASIS
TOLIET SEATS:	BEMIS, BENEKE, CENTOCO, ZURN
WATER HEATERS:	A.O. SMITH, CHRONOMITE, RHEEM, RUUD, STATE, STIEBEL ELTRON
EXPANSION TANK:	BRASSCRAFT, EASTMAN, McGUIRE, SPECIFIED TRIM, ZURN
SUPPLIES:	WATTS, WILKINS
OTHER MANUFACTURERS:	<u>SUBMIT FOR APPROVAL</u>

ELECTRIC WATER HEATER SCHEDULE						
UNIT NO.	LOCATION	STORAGE GAL	HEATING ELEMENTS KW	RECOVERY	ELECTRICAL SERVICE	REMARKS
WH-1*	PLUMBING CHASE	40	6	24 GPH @ 100°F	240/1/60	RHEEM MODEL ELD40-FTB OR APPROVED EQUAL

The diagrams are as follows:

- P 1:** Shows a connection from a septic tank to a main line, with a branch to P/2. Includes a 1/2" vent and a 2" vent to P/2.
- P 2:** Features a 2-WAY ECO 125 GALLON GREASE TRAP. Shows connections to P/1, P/4, and a 4" vent to P/4. Includes an ECO and a 4" vent to P/1.
- P 3:** Shows a complex layout with multiple 2" and 3" pipes, including a 3" vent thru roof, HD, INSULATION, FCO, and connections to P/5.
- P 4:** Shows a layout with a 3" vent thru roof, HD, INSULATION, FCO, and connections to P/2, P/3, and P/6. Includes a 3/4" vent and a 2" vent to P/6.
- P 5:** Shows a complex layout with multiple 2" and 3" pipes, including a 3" vent thru roof, HD, INSULATION, FCO, and connections to P/3, P/6, and P/7. Includes a 3/4" vent and a 2" vent to P/6.
- P 6:** Shows a complex layout with multiple 2" and 3" pipes, including a 3" vent thru roof, HD, INSULATION, FCO, and connections to P/3, P/6, and P/7. Includes a 3/4" vent and a 2" vent to P/6.
- P 7:** Shows a complex layout with multiple 2" and 3" pipes, including a 3" vent thru roof, HD, INSULATION, FCO, and connections to P/3, P/6, and P/7. Includes a 3/4" vent and a 2" vent to P/6.



WAY
Coco & Company
a professional

MANSURA, LOUISIANA AT OLD RIVER

35 of 40

Project No. 26019